

*Clock Tower
City of Dearborn
Dearborn, Mich.*

CLOCKS



**CAMPBELLVILLE
INDUSTRIES, INC.**

"The Steeple People"®...PLUS!

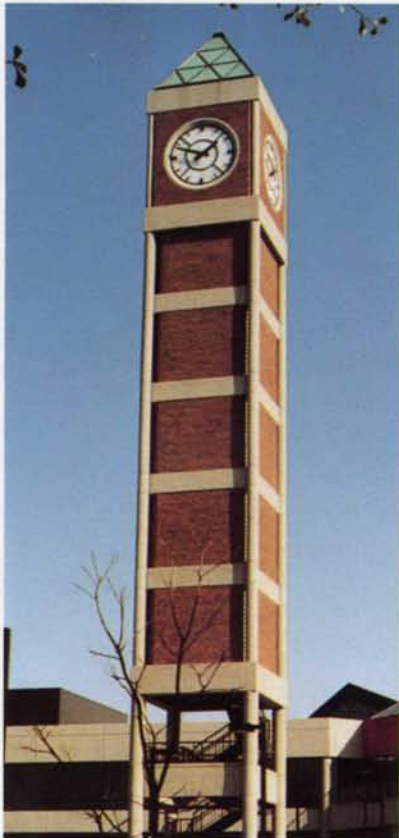


CLOCKS

Campbellsville clocks give that special service to communities throughout the country, whether in towers, at street corners, or on buildings. From one to four dials can be driven from central motor or separate motors—all synchronously driven. Remote controls with fast reset let you keep correct time.

Translucent or aluminum dials, choice of numerals, variety of style—all from Campbellsville. Complete construction details and wiring diagrams provided by our technicians.

*Morris Corporate Center
Parsippany, N.J.*



*University of Louisville
Louisville, KY*



*University Clock Tower
in Oklahoma*



*Freehold Raceway
Freehold, N.J.*

Let a Campbellville clock of distinction serve your community. There is a clock to compliment your tower or edifice, whether the design be traditional, contemporary, or modern. Our design department will work with you in all phases of planning.

Street Clocks

Campbellville street clocks give unique identity to cityscapes, parks, and streets. We can create unique and authentic designs for every application, or reproduce a historic clock and housing for those discriminating applications. A wide variety of popular designs are also available. Campbellville artisans apply their skills in casting, fabricating, spinning, and forming to obtain handsomely crafted units. Creations from our design department are available to assist in selecting just the right design and size. A wide range of metals (copper, aluminum, lead coated copper, microzinc, stainless steel, etc.) multiply the possibilities.



Street Clock In Copper Housing
In Campbellville, KY



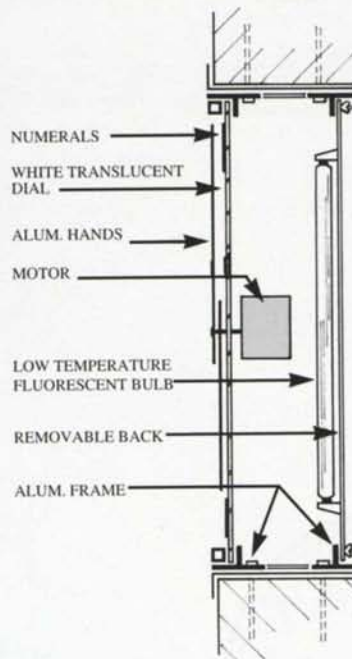
J. Walter Juckett Park
Hudson Falls, N.Y.

Robert Joy & Associates
Glen Falls, N.Y.



Canister Clocks

Campbellville canister clocks are self-contained units, all wrapped with aluminum sheet over a structural aluminum frame. Illumination of dials available, and the illumination system is also encased. An aluminum mounting ring allows for easy installation. Canister clocks are best suited for recessed or surface mounted installations.



Newfield Green Shopping Center
Stanford, CT.

A Campbellville clock system often combines ideally with a Campbellville steeple, cupola, or tower. Combination installations are more economical, and avoid installation coordination problems. Write or call for complete specifications.

CAMPBELLSVILLE CLOCKS



DIAL #CR-2
HANDS #M-143



DIAL #CL-3
HANDS #M-142



DIAL #A-5
HANDS #M-01



DIAL #AD-5
HANDS #M-03



DIAL #R-7
HANDS #M-09



DIAL #RD-7
HANDS #M-10

DIAL AND HANDS

The above selections of dials and hands represent a few popular designs. Custom designs can be provided. Individual markers or numerals available for surface wall mountings.



Control for two to four dials



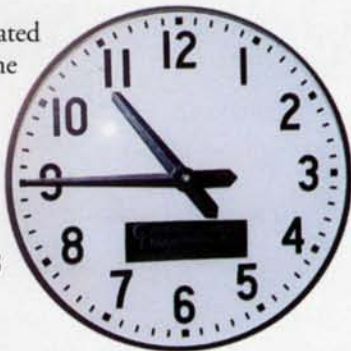
Control for single dial

CLOCK SETTING CONTROLS

Remote reset controls are available for all clock movements. The clock is wired to a reset control panel (as shown) which is in an easily accessible location. The control provides remote setting of clock hands by either stopping clock or advancing the hands at a 10:1 ratio.

PILOT CLOCK

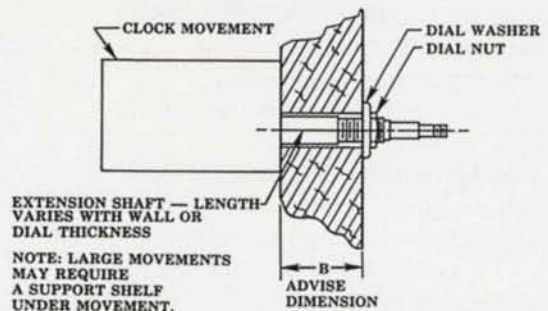
The pilot clock may be located in the viewing vicinity of the reset control panel. Pilot clocks are 10" diameter, wall mounted.



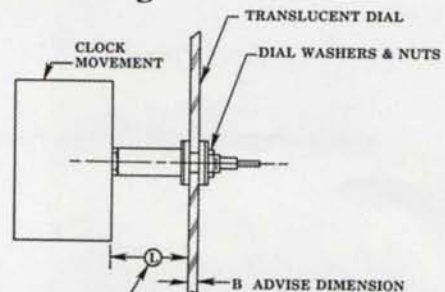
WIRING DIAGRAMS AND SHOP DRAWINGS PROVIDED.



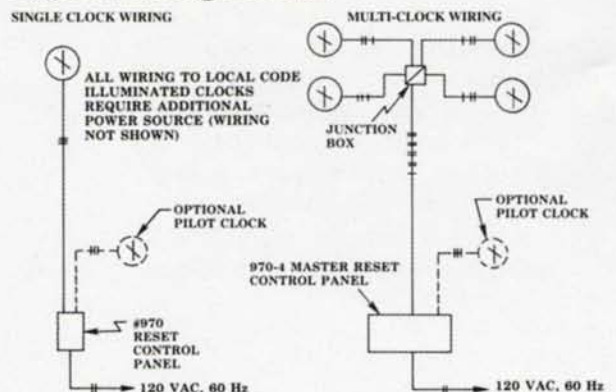
Typical Thru-Wall Mounting



Typical Backlighted Installation



Typical Wiring Circuits



"The Steeple People"®...PLUS!



CAMPBELLSVILLE
INDUSTRIES, INC.

TAYLOR BOULEVARD, CAMPBELLSVILLE, KY 42718
PHONE: 1-800-467-8135 • FAX: 1-270-465-6839
Canada call collect: 1-270-465-8135
www.cvilleindustries.com